

NEW


New 610X: Heavy duty wheel drive

The new 610X2 has been developed for all those agricultural applications that require a high torque rating, a high main bearings capacity, and the possibility to have a dynamic service brake in addition to the standard parking brake. In order to satisfy the most demanding applications, the new 610X allows a maximum torque up to 30000

Nm (peak torque 40000 Nm) and can be supplied in two different configurations:

- 610X with standard tapered roller bearings package, for single wheel applications.
- 610XH with heavy duty tapered roller bearings package, for dual wheel applications up to 780mm row width.





Applications

- Self-propelled Agricultural Sprayer
- Combine harvester
- Potato, Carrot harvester
- Forage harvester

Features

- High Torque capacity
(Max Rated Torque: 30000 Nm / Peak Torque: 40000 Nm)
- Available Ratios: 22.5 - 24.6 - 27.2 - 30.5 - 35 - 41.4 - 51.4
- High load capacity (Tapered roller bearings)
- Mechanical lifetime seals

Motors

- Cartridge axial piston Hydraulic motor (107cc , 110cc, 160cc)

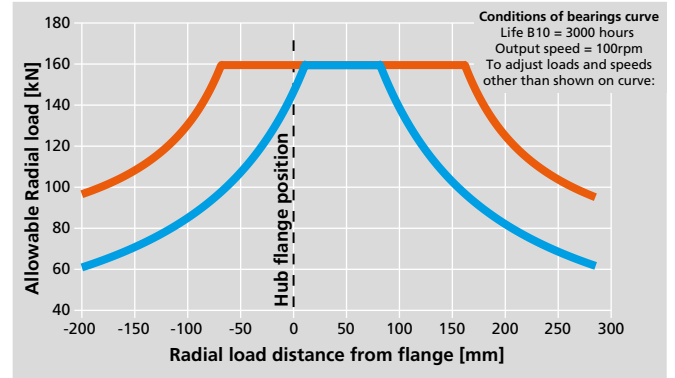
Brake

- Negative parking brake: spring applied pressure released (600 Nm to 1100 Nm).

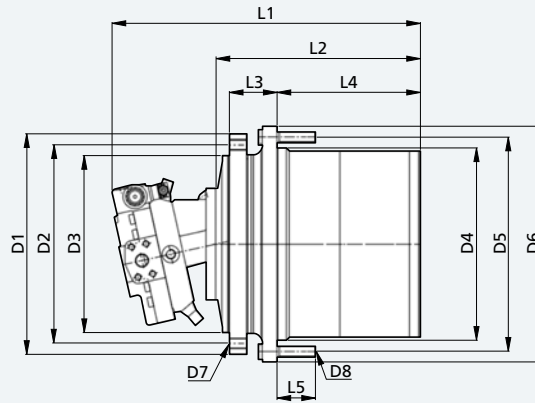
Special Options

- Mechanical gear disengagement
- Dynamic service brake: independent positive pressure braking torque modulation.
- Heavy duty bearings configuration (610X2H).
- Central Tyre Inflation System (available only on standard roller bearing version)

Radial Load Diagram
610X2 - 610X2H - Main bearings



NOTE: This Diagram is valid for radial load only (not combined with Axial loads)



Type	D1	D2	D3	D4	D5	D6	D7	D8	L1	L2	L3	L4	L5	C (kN)	CO (kN)
610X	410	370	330	360	400	440	M20x2.5 n°20	M20x1.5 n°16	Depend on motor type	383	90	268	72	270	561
610XH	410	370	330	360	400	440	M20x2.5 n°20	M20x1.5 n°16	Depend on motor type	383	90	268	72	440	808