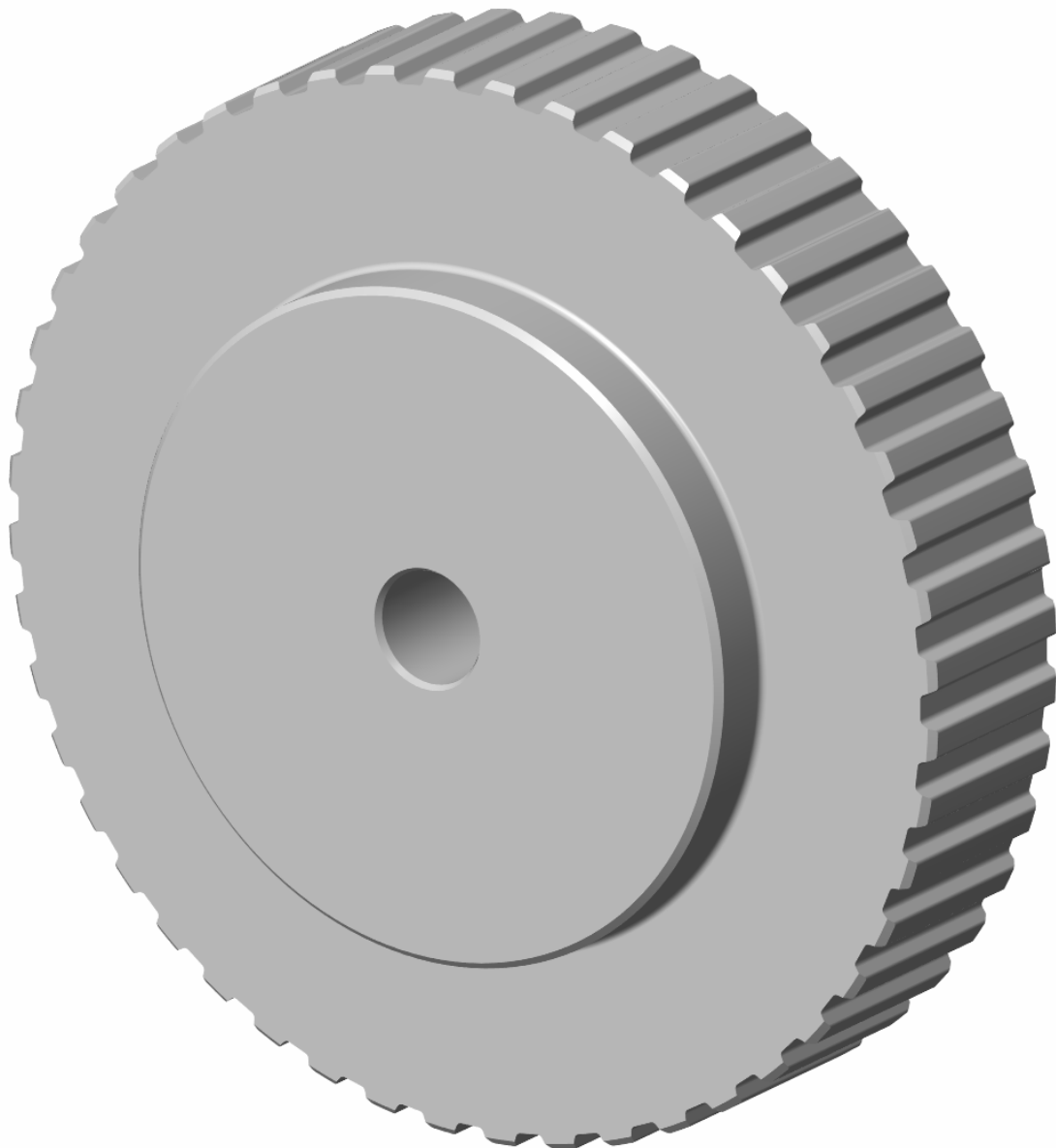




Pulegge dentate passo metrico monoblocco

Monobloc timing pulleys metric pitch
Zahnscheiben metrische Teilung
Poulies dentées monobloc pas métrique
Poleas dentadas macizas paso métrico





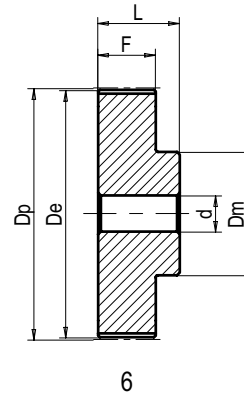
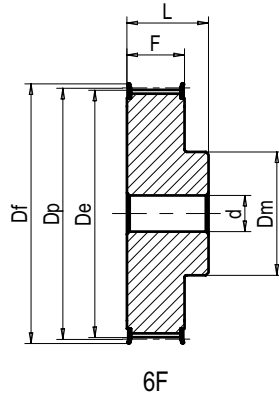
Pulegge dentate passo metrico AT monoblocco

Monobloc timing pulleys metric pitch AT

Zahnscheiben metrische Teilung AT

Poulies dentées monobloc pas métrique AT

Poleas dentadas macizas paso métrico AT



Codice di identificazione di una puleggia

Pulley code designation

Bestellcode der Scheibe

Code de désignation d'une poulie

Código de identificación de una polea

Esempio - Example - Beispiel - Exemple - Ejemplo:

Descrizione - Designation - Bezeichnung - Désignation - Referencia: 21 AT 5 12 6F	
Larghezza totale (L) in mm Total width (L) in mm - Gesamtbreite (L) in mm Largeur totale (L) en mm - Ancho total (L) en mm	Forma costruttiva Designe feature - Konstruktionmerkmale Caractéristique - Característica
Passo in mm Pitch in mm - Teilung in mm Pas en mm - Paso en mm	N° denti N. of teeth - Anzahl der Zähne Nombre de dents - Cantidad de dientes

Materiale:
Alluminio UNI 3571 TA 16
idoneo al trattamento
anodico.

Material:
Aluminium BS 6082
suitable to anodic treatment.

Werkstoff:
Aluminium DIN - Al Mg Si 1
geeignet für die Anodenoxydation.

Matériel:
Aluminium NF 6082
apte au traitement anodique.

Material:
Aluminio DIN - Al Mg Si 1
apto para la oxidación anódica.

AT 5 - 10 mm

Passo - Pitch - Teilung - Pas - Paso **5 mm**

Larghezza cinghia - Belt width - Riemenbreite - Largeur de la courroie - Ancho de la correa **10 mm**

Materiale Material Werkstoff Matériel Material	Codice Item number Codierung Code Código	Descrizione Designation Bezeichnung Désignation Referencia	N° denti N. of teeth Anzahl der Zähne Nombre de dents Cantidad de dientes	Dp mm	De mm	Df mm	Dm mm	F mm	L mm	d mm	Peso Weight Gewicht Poids Peso kg
Alluminio Aluminium Aluminium Aluminium	35AT051221	21 AT 5/12 - 6F	12	19,10	17,85	23,0	11	15	21	-	0,020
	35AT051421	21 AT 5/14 - 6F	14	22,28	21,05	25,0	14	15	21	-	0,020
	35AT051521	21 AT 5/15 - 6F	15	23,87	22,65	28,0	16	15	21	6	0,020
	35AT051621	21 AT 5/16 - 6F	16	25,46	24,20	32,0	18	15	21	6	0,030
	35AT051821	21 AT 5/18 - 6F	18	28,65	27,40	32,0	20	15	21	6	0,030
	35AT051921	21 AT 5/19 - 6F	19	30,24	29,00	36,0	22	15	21	6	0,040
	35AT052021	21 AT 5/20 - 6F	20	31,83	30,60	36,0	23	15	21	6	0,040
	35AT052221	21 AT 5/22 - 6F	22	35,01	33,85	38,0	24	15	21	6	0,050
	35AT052421	21 AT 5/24 - 6F	24	38,20	37,00	42,0	26	15	21	6	0,060
	35AT052521	21 AT 5/25 - 6F	25	39,79	38,60	44,0	26	15	21	6	0,060
	35AT052621	21 AT 5/26 - 6F	26	41,38	40,20	44,0	26	15	21	6	0,060
	35AT052721	21 AT 5/27 - 6F	27	42,97	41,80	48,0	30	15	21	8	0,070
	35AT052821	21 AT 5/28 - 6F	28	44,56	43,35	48,0	32	15	21	8	0,080
	35AT053021	21 AT 5/30 - 6F	30	47,75	46,55	51,0	34	15	21	8	0,090
	35AT053221	21 AT 5/32 - 6F	32	50,93	49,70	54,0	38	15	21	8	0,100
	35AT053621	21 AT 5/36 - 6F	36	57,30	56,05	63,0	38	15	21	8	0,130
	35AT054021	21 AT 5/40 - 6F	40	63,66	62,45	66,0	40	15	21	8	0,150
	35AT054221	21 AT 5/42 - 6F	42	66,85	65,60	71,0	40	15	21	8	0,180
	35AT054421	21 AT 5/44 - 6	44	70,03	68,80	-	45	15	21	8	0,170
	35AT054821	21 AT 5/48 - 6	48	76,39	75,15	-	50	15	21	8	0,210
35AT056021	21 AT 5/60 - 6	60	95,49	94,25	-	65	15	21	8	0,330	



Pulegge dentate passo metrico AT monoblocco

Monobloc timing pulleys metric pitch AT

Zahnscheiben metrische Teilung AT

Poulies dentées monobloc pas métrique AT

Poleas dentadas macizas paso métrico AT

AT 5 - 16 mm

Passo - Pitch - Teilung - Pas - Paso 5 mm

Larghezza cinghia - Belt width - Riemenbreite - Largeur de la courroie - Ancho de la correa 16 mm

Materiale Material Werkstoff Matériel Material	Codice Item number Codierung Code Código	Descrizione Designation Bezeichnung Désignation Referencia	N° denti N. of teeth Anzahl der Zähne Nombre de dents Cantidad de dientes	Dp mm	De mm	Df mm	Dm mm	F mm	L mm	d mm	Peso Weight Gewicht Poids Peso kg
Alluminio Aluminium Aluminium Aluminium Aluminio	35AT051227	27 AT 5/12 - 6F	12	19,10	17,85	23,0	11	21	27	-	0,020
	35AT051427	27 AT 5/14 - 6F	14	22,28	21,05	25,0	14	21	27	-	0,030
	35AT051527	27 AT 5/15 - 6F	15	23,87	22,65	28,0	16	21	27	6	0,030
	35AT051627	27 AT 5/16 - 6F	16	25,46	24,20	32,0	18	21	27	6	0,040
	35AT051827	27 AT 5/18 - 6F	18	28,65	27,40	32,0	20	21	27	6	0,050
	35AT051927	27 AT 5/19 - 6F	19	30,24	29,00	36,0	22	21	27	6	0,050
	35AT052027	27 AT 5/20 - 6F	20	31,83	30,60	36,0	23	21	27	6	0,050
	35AT052227	27 AT 5/22 - 6F	22	35,01	33,85	38,0	24	21	27	6	0,060
	35AT052427	27 AT 5/24 - 6F	24	38,20	37,00	42,0	26	21	27	6	0,070
	35AT052527	27 AT 5/25 - 6F	25	39,79	38,60	44,0	26	21	27	6	0,080
	35AT052627	27 AT 5/26 - 6F	26	41,38	40,20	44,0	26	21	27	6	0,090
	35AT052727	27 AT 5/27 - 6F	27	42,97	41,80	48,0	30	21	27	8	0,100
	35AT052827	27 AT 5/28 - 6F	28	44,56	43,35	48,0	32	21	27	8	0,100
	35AT053027	27 AT 5/30 - 6F	30	47,75	46,55	51,0	34	21	27	8	0,120
	35AT053227	27 AT 5/32 - 6F	32	50,93	49,70	54,0	38	21	27	8	0,130
	35AT053627	27 AT 5/36 - 6F	36	57,30	56,05	63,0	38	21	27	8	0,170
	35AT054027	27 AT 5/40 - 6F	40	63,66	62,45	66,0	40	21	27	8	0,200
	35AT054227	27 AT 5/42 - 6F	42	66,85	65,60	71,0	40	21	27	8	0,220
	35AT054427	27 AT 5/44 - 6	44	70,03	68,80	-	45	21	27	8	0,230
	35AT054827	27 AT 5/48 - 6	48	76,39	75,15	-	50	21	27	8	0,280
35AT056027	27 AT 5/60 - 6	60	95,49	94,25	-	65	21	27	8	0,440	

AT 5 - 25 mm

Passo - Pitch - Teilung - Pas - Paso 5 mm

Larghezza cinghia - Belt width - Riemenbreite - Largeur de la courroie - Ancho de la correa 25 mm

Materiale Material Werkstoff Matériel Material	Codice Item number Codierung Code Código	Descrizione Designation Bezeichnung Désignation Referencia	N° denti N. of teeth Anzahl der Zähne Nombre de dents Cantidad de dientes	Dp mm	De mm	Df mm	Dm mm	F mm	L mm	d mm	Peso Weight Gewicht Poids Peso kg
Alluminio Aluminium Aluminium Aluminium Aluminio	35AT051236	36 AT 5/12 - 6F	12	19,10	17,85	23,0	11	30	36	-	0,020
	35AT051436	36 AT 5/14 - 6F	14	22,28	21,05	25,0	14	30	36	-	0,032
	35AT051536	36 AT 5/15 - 6F	15	23,87	22,65	28,0	16	30	36	6	0,040
	35AT051636	36 AT 5/16 - 6F	16	25,46	24,20	32,0	18	30	36	6	0,040
	35AT051836	36 AT 5/18 - 6F	18	28,65	27,40	32,0	20	30	36	6	0,050
	35AT051936	36 AT 5/19 - 6F	19	30,24	29,00	36,0	22	30	36	6	0,070
	35AT052036	36 AT 5/20 - 6F	20	31,83	30,60	36,0	23	30	36	6	0,070
	35AT052236	36 AT 5/22 - 6F	22	35,01	33,85	38,0	24	30	36	6	0,080
	35AT052436	36 AT 5/24 - 6F	24	38,20	37,00	42,0	26	30	36	8	0,090
	35AT052536	36 AT 5/25 - 6F	25	39,79	38,60	44,0	26	30	36	8	0,090
	35AT052636	36 AT 5/26 - 6F	26	41,38	40,20	44,0	26	30	36	8	0,110
	35AT052736	36 AT 5/27 - 6F	27	42,97	41,80	48,0	30	30	36	8	0,120
	35AT052836	36 AT 5/28 - 6F	28	44,56	43,35	48,0	32	30	36	8	0,130
	35AT053036	36 AT 5/30 - 6F	30	47,75	46,55	51,0	34	30	36	8	0,150
	35AT053236	36 AT 5/32 - 6F	32	50,93	49,70	54,0	38	30	36	8	0,170
	35AT053636	36 AT 5/36 - 6F	36	57,30	56,05	63,0	38	30	36	8	0,220
	35AT054036	36 AT 5/40 - 6F	40	63,66	62,45	66,0	40	30	36	8	0,270
	35AT054236	36 AT 5/42 - 6F	42	66,85	65,60	71,0	40	30	36	8	0,300
	35AT054436	36 AT 5/44 - 6	44	70,03	68,80	-	45	30	36	8	0,320
	35AT054836	36 AT 5/48 - 6	48	76,39	75,15	-	50	30	36	8	0,390
35AT056036	36 AT 5/60 - 6	60	95,49	94,25	-	65	30	36	8	0,610	



Pulegge dentate passo metrico AT monoblocco

Monobloc timing pulleys metric pitch AT

Zahnscheiben metrische Teilung AT

Poulies dentées monobloc pas métrique AT

Poleas dentadas macizas paso métrico AT

AT 10 - 16 mm

Passo - Pitch - Teilung - Pas - Paso 10 mm

Larghezza cinghia - Belt width - Riemenbreite - Largeur de la courroie - Ancho de la correa 16 mm

Materiale Material Werkstoff Matériel Material	Codice Item number Codierung Code Código	Descrizione Designation Bezeichnung Désignation Referencia	N° denti N. of teeth Anzahl der Zähne Nombre de dents Cantidad de dientes	Dp mm	De mm	Df mm	Dm mm	F mm	L mm	d mm	Peso Weight Gewicht Poids Peso kg
Alluminio Aluminium Aluminium Aluminium Aluminio	35AT101531	31 AT 10/15 - 6F	15	47,75	45,90	51,0	32	21	31	8	0,110
	35AT101631	31 AT 10/16 - 6F	16	50,93	49,05	54,0	35	21	31	8	0,130
	35AT101831	31 AT 10/18 - 6F	18	57,30	55,45	60,0	40	21	31	8	0,170
	35AT101931	31 AT 10/19 - 6F	19	60,48	58,60	66,0	44	21	31	8	0,200
	35AT102031	31 AT 10/20 - 6F	20	63,66	61,80	66,0	46	21	31	8	0,220
	35AT102231	31 AT 10/22 - 6F	22	70,03	68,15	75,0	52	21	31	8	0,270
	35AT102431	31 AT 10/24 - 6F	24	76,39	74,55	83,0	58	21	31	8	0,330
	35AT102531	31 AT 10/25 - 6F	25	79,58	77,70	83,0	60	21	31	8	0,360
	35AT102631	31 AT 10/26 - 6F	26	82,76	80,90	87,0	60	21	31	8	0,370
	35AT102731	31 AT 10/27 - 6F	27	85,94	84,10	91,0	60	21	31	8	0,400
	35AT102831	31 AT 10/28 - 6F	28	89,13	87,25	93,0	60	21	31	8	0,420
	35AT103031	31 AT 10/30 - 6F	30	95,49	93,65	97,0	60	21	31	8	0,460
	35AT103231	31 AT 10/32 - 6F	32	101,86	100,00	106,0	65	21	31	10	0,530
	35AT103631	31 AT 10/36 - 6F	36	114,59	112,75	119,0	70	21	31	10	0,700
	35AT104031	31 AT 10/40 - 6F	40	127,32	125,45	131,0	80	21	31	10	0,870
	35AT104431	31 AT 10/44 - 6	44	140,06	138,20	-	88	21	31	10	1,000
	35AT104831	31 AT 10/48 - 6	48	152,79	150,95	-	95	21	31	16	1,200
	35AT106031	31 AT 10/60 - 6	60	190,99	189,10	-	110	21	31	16	1,850

AT 10 - 25 mm

Passo - Pitch - Teilung - Pas - Paso 10 mm

Larghezza cinghia - Belt width - Riemenbreite - Largeur de la courroie - Ancho de la correa 25 mm

Materiale Material Werkstoff Matériel Material	Codice Item number Codierung Code Código	Descrizione Designation Bezeichnung Désignation Referencia	N° denti N. of teeth Anzahl der Zähne Nombre de dents Cantidad de dientes	Dp mm	De mm	Df mm	Dm mm	F mm	L mm	d mm	Peso Weight Gewicht Poids Peso kg
Alluminio Aluminium Aluminium Aluminium Aluminio	35AT101540	40 AT 10/15 - 6F	15	47,75	45,90	51,0	32	30	40	8	0,150
	35AT101640	40 AT 10/16 - 6F	16	50,93	49,05	54,0	35	30	40	8	0,180
	35AT101840	40 AT 10/18 - 6F	18	57,30	55,45	60,0	40	30	40	8	0,230
	35AT101940	40 AT 10/19 - 6F	19	60,48	58,60	66,0	44	30	40	8	0,260
	35AT102040	40 AT 10/20 - 6F	20	63,66	61,80	66,0	46	30	40	8	0,280
	35AT102240	40 AT 10/22 - 6F	22	70,03	68,15	75,0	52	30	40	8	0,350
	35AT102440	40 AT 10/24 - 6F	24	76,39	74,55	83,0	58	30	40	8	0,410
	35AT102540	40 AT 10/25 - 6F	25	79,58	77,70	83,0	60	30	40	8	0,460
	35AT102640	40 AT 10/26 - 6F	26	82,76	80,90	87,0	60	30	40	8	0,490
	35AT102740	40 AT 10/27 - 6F	27	85,94	84,10	91,0	60	30	40	8	0,530
	35AT102840	40 AT 10/28 - 6F	28	89,13	87,25	93,0	60	30	40	8	0,550
	35AT103040	40 AT 10/30 - 6F	30	95,49	93,65	97,0	60	30	40	8	0,620
	35AT103240	40 AT 10/32 - 6F	32	101,86	100,00	106,0	65	30	40	10	0,700
	35AT103640	40 AT 10/36 - 6F	36	114,59	112,75	119,0	70	30	40	10	0,910
	35AT104040	40 AT 10/40 - 6F	40	127,32	125,45	131,0	80	30	40	10	1,110
	35AT104440	40 AT 10/44 - 6	44	140,06	138,20	-	88	30	40	10	1,340
	35AT104840	40 AT 10/48 - 6	48	152,79	150,95	-	95	30	40	16	1,630
	35AT106040	40 AT 10/60 - 6	60	190,99	189,10	-	110	30	40	16	2,520



Pulegge dentate passo metrico AT monoblocco

Monobloc timing pulleys metric pitch AT

Zahnscheiben metrische Teilung AT

Poulies dentées monobloc pas métrique AT

Poleas dentadas macizas paso métrico AT

AT 10 - 32 mm

Passo - Pitch - Teilung - Pas - Paso 10 mm

Larghezza cinghia - Belt width - Riemenbreite - Largeur de la courroie - Ancho de la correa 32 mm

Materiale Material Werkstoff Matériel Material	Codice Item number Codierung Code Código	Descrizione Designation Bezeichnung Désignation Referencia	N° denti N. of teeth Anzahl der Zähne Nombre de dents Cantidad de dientes	Dp mm	De mm	Df mm	Dm mm	F mm	L mm	d mm	Peso Weight Gewicht Poids Peso kg
Alluminio Aluminium Aluminium Aluminium Aluminio	35AT101847	47 AT 10/18 - 6F	18	57,30	55,45	60,0	40	37	47	10	0,260
	35AT101947	47 AT 10/19 - 6F	19	60,48	58,60	66,0	44	37	47	10	0,300
	35AT102047	47 AT 10/20 - 6F	20	63,66	61,80	66,0	46	37	47	12	0,320
	35AT102247	47 AT 10/22 - 6F	22	70,03	68,15	75,0	52	37	47	12	0,400
	35AT102447	47 AT 10/24 - 6F	24	76,39	74,55	83,0	58	37	47	12	0,490
	35AT102547	47 AT 10/25 - 6F	25	79,58	77,70	83,0	60	37	47	12	0,520
	35AT102647	47 AT 10/26 - 6F	26	82,76	80,90	87,0	60	37	47	12	0,560
	35AT102747	47 AT 10/27 - 6F	27	85,94	84,10	91,0	60	37	47	12	0,610
	35AT102847	47 AT 10/28 - 6F	28	89,13	87,25	93,0	60	37	47	12	0,650
	35AT103047	47 AT 10/30 - 6F	30	95,49	93,65	97,0	60	37	47	12	0,730
	35AT103247	47 AT 10/32 - 6F	32	101,86	100,00	106,0	65	37	47	12	0,840
	35AT103647	47 AT 10/36 - 6F	36	114,59	112,75	119,0	70	37	47	16	1,070
	35AT104047	47 AT 10/40 - 6F	40	127,32	125,45	131,0	80	37	47	16	1,340
	35AT104447	47 AT 10/44 - 6	44	140,06	138,20	-	88	37	47	16	1,600
	35AT104847	47 AT 10/48 - 6	48	152,79	150,95	-	95	37	47	16	1,900
	35AT106047	47 AT 10/60 - 6	60	190,99	189,10	-	110	37	47	16	2,950

AT 10 - 50 mm

Passo - Pitch - Teilung - Pas - Paso 10 mm

Larghezza cinghia - Belt width - Riemenbreite - Largeur de la courroie - Ancho de la correa 50 mm

Materiale Material Werkstoff Matériel Material	Codice Item number Codierung Code Código	Descrizione Designation Bezeichnung Désignation Referencia	N° denti N. of teeth Anzahl der Zähne Nombre de dents Cantidad de dientes	Dp mm	De mm	Df mm	Dm mm	F mm	L mm	d mm	Peso Weight Gewicht Poids Peso kg
Alluminio Aluminium Aluminium Aluminium Aluminio	35AT101866	66 AT 10/18 - 6F	18	57,30	55,45	60,0	40	56	66	10	0,370
	35AT101966	66 AT 10/19 - 6F	19	60,48	58,60	66,0	44	56	66	10	0,420
	35AT102066	66 AT 10/20 - 6F	20	63,66	61,80	66,0	46	56	66	12	0,460
	35AT102266	66 AT 10/22 - 6F	22	70,03	68,15	75,0	52	56	66	12	0,560
	35AT102466	66 AT 10/24 - 6F	24	76,39	74,55	83,0	58	56	66	12	0,680
	35AT102566	66 AT 10/25 - 6F	25	79,58	77,70	83,0	60	56	66	12	0,750
	35AT102666	66 AT 10/26 - 6F	26	82,76	80,90	87,0	60	56	66	12	0,800
	35AT102766	66 AT 10/27 - 6F	27	85,94	84,10	91,0	60	56	66	12	0,890
	35AT102866	66 AT 10/28 - 6F	28	89,13	87,25	93,0	60	56	66	12	0,950
	35AT103066	66 AT 10/30 - 6F	30	95,49	93,65	97,0	60	56	66	12	1,070
	35AT103266	66 AT 10/32 - 6F	32	101,86	100,00	106,0	65	56	66	12	1,240
	35AT103666	66 AT 10/36 - 6F	36	114,59	112,75	119,0	70	56	66	16	1,560
	35AT104066	66 AT 10/40 - 6F	40	127,32	125,45	131,0	80	56	66	16	1,940
	35AT104466	66 AT 10/44 - 6	44	140,06	138,20	-	88	56	66	16	2,320
	35AT104866	66 AT 10/48 - 6	48	152,79	150,95	-	95	56	66	16	2,890
	35AT106066	66 AT 10/60 - 6	60	190,99	189,10	-	110	56	66	16	4,330



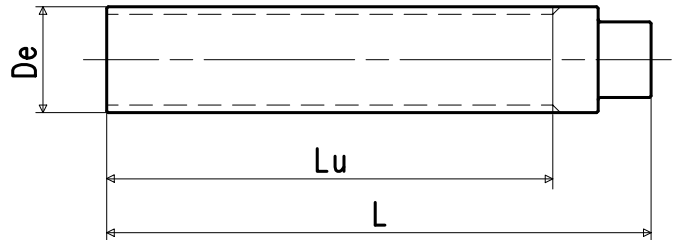
Barre dentate passo metrico AT

Timing bars metric pitch AT
Zahnstangen metrische AT Teilung
Barreaux dentés pas métrique AT
Barras dentadas paso métrico AT

Tipo di materiale - Type of material - Werkstoff - Type de matière - Tipo de material:

AL = alluminio idoneo al trattamento anodico.
aluminium can be subjected to the anodic treatment.
Aluminium ist für die Anodenoxydation geeignet.
aluminium apte au traitement anodique.
aluminio apto para la oxydación anódica.

ST = acciaio - steel - Stahl - acier - acero



AT 5

Passo - Pitch - Teilung - Pas - Paso 5 mm

Codice Item number Codierung Code Código	Descrizione Designation Bezeichnung Désignation Referencia	N° denti N. of teeth Anzahl der Zähne Nombre de dents Cantidad de dientes	Dp mm	De mm	Lu mm	L mm
77AT05012	12 AT 5-175 AL	12	19,10	17,85	175	190
77AT05012X	12 AT 5-175 ST	12	19,10	17,85	175	190
77AT05013	13 AT 5-175 AL	13	20,69	19,45	175	190
77AT05013X	13 AT 5-175 ST	13	20,69	19,45	175	190
77AT05014	14 AT 5-175 AL	14	22,28	21,05	175	190
77AT05014X	14 AT 5-175 ST	14	22,28	21,05	175	190
77AT05015	15 AT 5-175 AL	15	23,87	22,65	175	190
77AT05015X	15 AT 5-175 ST	15	23,87	22,65	175	190
77AT05016	16 AT 5-175 AL	16	25,46	24,20	175	190
77AT05016X	16 AT 5-175 ST	16	25,46	24,20	175	190
77AT05017	17 AT 5-200 AL	17	27,06	25,80	200	210
77AT05017X	17 AT 5-200 ST	17	27,06	25,80	200	210
77AT05018	18 AT 5-200 AL	18	28,65	27,40	200	210
77AT05018X	18 AT 5-200 ST	18	28,65	27,40	200	210
77AT05019	19 AT 5-200 AL	19	30,24	29,00	200	210
77AT05019X	19 AT 5-200 ST	19	30,24	29,00	200	210
77AT05020	20 AT 5-200 AL	20	31,83	30,60	200	210
77AT05020X	20 AT 5-200 ST	20	31,83	30,60	200	210
77AT05021	21 AT 5-200 AL	21	33,42	32,30	200	210
77AT05021X	21 AT 5-200 ST	21	33,42	32,30	200	210
77AT05022	22 AT 5-200 AL	22	35,01	33,85	200	210
77AT05022X	22 AT 5-200 ST	22	35,01	33,85	200	210
77AT05023	23 AT 5-200 AL	23	36,61	35,45	200	210
77AT05023X	23 AT 5-200 ST	23	36,61	35,45	200	210
77AT05024	24 AT 5-200 AL	24	38,20	37,00	200	210
77AT05024X	24 AT 5-200 ST	24	38,20	37,00	200	210
77AT05025	25 AT 5-200 AL	25	39,79	38,60	200	210
77AT05025X	25 AT 5-200 ST	25	39,79	38,60	200	210
77AT05026	26 AT 5-200 AL	26	41,38	40,20	200	210
77AT05026X	26 AT 5-200 ST	26	41,38	40,20	200	210
77AT05027	27 AT 5-200 AL	27	42,97	41,80	200	210
77AT05027X	27 AT 5-200 ST	27	42,97	41,80	200	210
77AT05028	28 AT 5-200 AL	28	44,56	43,35	200	210
77AT05028X	28 AT 5-200 ST	28	44,56	43,35	200	210
77AT05029	29 AT 5-200 AL	29	46,15	44,95	200	200
77AT05029X	29 AT 5-200 ST	29	46,15	44,95	200	200
77AT05030	30 AT 5-200 AL	30	47,75	46,55	200	200
77AT05030X	30 AT 5-200 ST	30	47,75	46,55	200	200
77AT05031	31 AT 5-200 AL	31	49,34	48,15	200	200
77AT05031X	31 AT 5-200 ST	31	49,34	48,15	200	200
77AT05032	32 AT 5-200 AL	32	50,93	49,70	200	200
77AT05032X	32 AT 5-200 ST	32	50,93	49,70	200	200
77AT05033	33 AT 5-200 AL	33	52,52	51,30	200	200
77AT05033X	33 AT 5-200 ST	33	52,52	51,30	200	200
77AT05034	34 AT 5-200 AL	34	54,11	52,85	200	200
77AT05034X	34 AT 5-200 ST	34	54,11	52,85	200	200
77AT05035	35 AT 5-200 AL	35	55,70	54,45	200	200

Codice Item number Codierung Code Código	Descrizione Designation Bezeichnung Désignation Referencia	N° denti N. of teeth Anzahl der Zähne Nombre de dents Cantidad de dientes	Dp mm	De mm	Lu mm	L mm
77AT05035X	35 AT 5-200 ST	35	55,70	54,45	200	200
77AT05036	36 AT 5-200 AL	36	57,30	56,05	200	200
77AT05036X	36 AT 5-200 ST	36	57,30	56,05	200	200
77AT05038	38 AT 5-200 AL	38	60,48	59,25	200	200
77AT05038X	38 AT 5-200 ST	38	60,48	59,25	200	200
77AT05040	40 AT 5-200 AL	40	63,66	62,45	200	200
77AT05040X	40 AT 5-200 ST	40	63,66	62,45	200	200
77AT05042	42 AT 5-200 AL	42	66,85	65,60	200	200
77AT05042X	42 AT 5-200 ST	42	66,85	65,60	200	200
77AT05044	44 AT 5-200 AL	44	70,03	68,80	200	200
77AT05044X	44 AT 5-200 ST	44	70,03	68,80	200	200
77AT05045	45 AT 5-200 AL	45	71,62	70,40	200	200
77AT05045X	45 AT 5-200 ST	45	71,62	70,40	200	200
77AT05046	46 AT 5-200 AL	46	73,21	72,00	200	200
77AT05046X	46 AT 5-200 ST	46	73,21	72,00	200	200
77AT05048	48 AT 5-200 AL	48	76,39	75,15	200	200
77AT05048X	48 AT 5-200 ST	48	76,39	75,15	200	200
77AT05050	50 AT 5-200 AL	50	79,58	78,35	200	200
77AT05050X	50 AT 5-200 ST	50	79,58	78,35	200	200
77AT05052	52 AT 5-200 AL	52	82,76	81,55	200	200
77AT05052X	52 AT 5-200 ST	52	82,76	81,55	200	200
77AT05054	54 AT 5-200 AL	54	85,94	84,70	200	200
77AT05054X	54 AT 5-200 ST	54	85,94	84,70	200	200
77AT05055	55 AT 5-200 AL	55	87,54	86,30	200	200
77AT05055X	55 AT 5-200 ST	55	87,54	86,30	200	200
77AT05056	56 AT 5-200 AL	56	89,13	87,90	200	200
77AT05056X	56 AT 5-200 ST	56	89,13	87,90	200	200
77AT05058	58 AT 5-200 AL	58	92,31	91,10	200	200
77AT05058X	58 AT 5-200 ST	58	92,31	91,10	200	200
77AT05060	60 AT 5-200 AL	60	95,49	94,25	200	200
77AT05060X	60 AT 5-200 ST	60	95,49	94,25	200	200
77AT05062	62 AT 5-200 AL	62	98,68	97,45	200	200
77AT05062X	62 AT 5-200 ST	62	98,68	97,45	200	200
77AT05064	64 AT 5-200 AL	64	101,86	100,65	200	200
77AT05064X	64 AT 5-200 ST	64	101,86	100,65	200	200
77AT05065	65 AT 5-200 AL	65	103,45	102,25	200	200
77AT05065X	65 AT 5-200 ST	65	103,45	102,25	200	220
77AT05066	66 AT 5-200 AL	66	105,04	103,82	200	200
77AT05066X	66 AT 5-200 ST	66	105,04	103,82	200	220
77AT05070	70 AT 5-200 AL	70	111,41	110,20	200	200
77AT05070X	70 AT 5-200 ST	70	111,41	110,20	200	220
77AT05072	72 AT 5-200 AL	72	114,59	113,35	200	200
77AT05072X	72 AT 5-200 ST	72	114,59	113,35	200	220
77AT05075	75 AT 5-200 AL	75	119,37	118,14	200	200
77AT05075X	75 AT 5-200 ST	75	119,37	118,14	200	220
77AT05090	90 AT 5-200 AL	90	143,24	142,02	200	200
77AT05090X	90 AT 5-200 ST	90	143,24	142,02	200	220



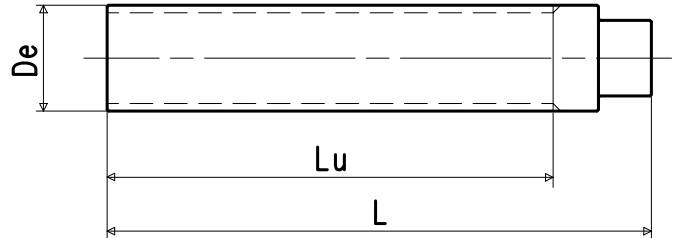
Barre dentate passo metrico AT

Timing bars metric pitch AT
Zahnstangen metrische AT Teilung
Barreaux dentés pas métrique AT
Barras dentadas paso métrico AT

Tipo di materiale - Type of material - Werkstoff - Type de matière - Tipo de material:

AL = alluminio idoneo al trattamento anodico.
aluminium can be subjected to the anodic treatment.
Aluminium ist für die Anodenoxydation geeignet.
aluminium apte au traitement anodique.
aluminio apto para la oxidación anódica.

ST = acciaio - steel - Stahl - acier - acero



Se ancora in stock saranno consegnate barre del gruppo merceologico 17.

We will deliver bars of item group 17 until stocks are sold out.

Solang noch im Stock werden alte Zahnstangen (Artikel-Gruppe 17) geliefert.

Nous livrerons les barreaux de la famille 17 jusqu'à l'épuisement du stock.

Entregaremos las barras del grupo 17 hasta el agotamiento del stock.

AT 10

Passo - Pitch - Teilung - Pas - Paso 10 mm

Codice Item number Codierung Code Código	Descrizione Designation Bezeichnung Désignation Referencia	N° denti N. of teeth Anzahl der Zähne Nombre de dents Cantidad de dientes	Dp mm	De mm	Lu mm	L mm
77AT10014	14 AT10-200 AL	14	44,56	42,70	200	210
77AT10014X	14 AT10-200 ST	14	44,56	42,70	200	210
77AT10015	15 AT10-200 AL	15	47,75	45,90	200	200
77AT10015X	15 AT10-200 ST	15	47,75	45,90	200	200
77AT10016	16 AT10-200 AL	16	50,93	49,05	200	200
77AT10016X	16 AT10-200 ST	16	50,93	49,05	200	200
77AT10017	17 AT10-200 AL	17	54,11	52,25	200	200
77AT10017X	17 AT10-200 ST	17	54,11	52,25	200	200
77AT10018	18 AT10-200 AL	18	57,30	55,45	200	200
77AT10018X	18 AT10-200 ST	18	57,30	55,45	200	200
77AT10019	19 AT10-200 AL	19	60,48	58,60	200	200
77AT10019X	19 AT10-200 ST	19	60,48	58,60	200	200
77AT10020	20 AT10-200 AL	20	63,66	61,80	200	200
77AT10020X	20 AT10-200 ST	20	63,66	61,80	200	200
77AT10021	21 AT10-200 AL	21	66,85	65,00	200	200
77AT10021X	21 AT10-200 ST	21	66,85	65,00	200	200
77AT10022	22 AT10-200 AL	22	70,03	68,15	200	200
77AT10022X	22 AT10-200 ST	22	70,03	68,15	200	200
77AT10023	23 AT10-200 AL	23	73,21	71,35	200	200
77AT10023X	23 AT10-200 ST	23	73,21	71,35	200	200
77AT10024	24 AT10-200 AL	24	76,39	74,55	200	200
77AT10024X	24 AT10-200 ST	24	76,39	74,55	200	200
77AT10025	25 AT10-200 AL	25	79,58	77,70	200	200
77AT10025X	25 AT10-200 ST	25	79,58	77,70	200	200
77AT10026	26 AT10-200 AL	26	82,76	80,90	200	200
77AT10026X	26 AT10-200 ST	26	82,76	80,90	200	200
77AT10027	27 AT10-200 AL	27	85,94	84,10	200	200
77AT10027X	27 AT10-200 ST	27	85,94	84,10	200	200
77AT10028	28 AT10-200 AL	28	89,13	87,25	200	200
77AT10028X	28 AT10-200 ST	28	89,13	87,25	200	200
77AT10029	29 AT10-200 AL	29	92,31	90,47	200	200
77AT10029X	29 AT10-200 ST	29	92,31	90,47	200	200
77AT10030	30 AT10-200 AL	30	95,49	93,65	200	200
77AT10030X	30 AT10-200 ST	30	95,49	93,65	200	200
77AT10031	31 AT10-200 AL	31	98,68	96,80	200	200
77AT10031X	31 AT10-200 ST	31	98,68	96,80	200	200
77AT10032	32 AT10-200 AL	32	101,86	100,00	200	200
77AT10032X	32 AT10-200 ST	32	101,86	100,00	200	200
77AT10033	33 AT10-200 AL	33	105,04	103,20	200	200
77AT10033X	33 AT10-200 ST	33	105,04	103,20	200	220
77AT10034	34 AT10-200 AL	34	108,23	106,40	200	200
77AT10034X	34 AT10-200 ST	34	108,23	106,40	200	220
77AT10035	35 AT10-200 AL	35	111,41	109,55	200	200
77AT10035X	35 AT10-200 ST	35	111,41	109,55	200	220
77AT10036	36 AT10-200 AL	36	114,59	112,75	200	200

Codice Item number Codierung Code Código	Descrizione Designation Bezeichnung Désignation Referencia	N° denti N. of teeth Anzahl der Zähne Nombre de dents Cantidad de dientes	Dp mm	De mm	Lu mm	L mm
77AT10036X	36 AT10-200 ST	36	114,59	112,75	200	220
77AT10037	37 AT10-200 AL	37	117,77	115,90	200	200
77AT10037X	37 AT10-200 ST	37	117,77	115,90	200	220
77AT10038	38 AT10-200 AL	38	120,96	119,10	200	200
77AT10038X	38 AT10-200 ST	38	120,96	119,10	200	220
77AT10040	40 AT10-200 AL	40	127,32	125,45	200	200
77AT10040X	40 AT10-200 ST	40	127,32	125,45	200	220
77AT10041	41 AT10-200 AL	41	130,51	128,65	200	200
77AT10041X	41 AT10-200 ST	41	130,51	128,65	200	220
77AT10042	42 AT10-200 AL	42	133,69	131,85	200	200
77AT10042X	42 AT10-200 ST	42	133,69	131,85	200	220
77AT10044	44 AT10-200 AL	44	140,06	138,20	200	200
77AT10044X	44 AT10-200 ST	44	140,06	138,20	200	220
77AT10045	45 AT10-200 AL	45	143,24	141,40	200	200
77AT10045X	45 AT10-200 ST	45	143,24	141,40	200	220
77AT10046	46 AT10-200 AL	46	146,42	144,55	200	200
77AT10046X	46 AT10-200 ST	46	146,42	144,55	200	220
77AT10048	48 AT10-200 AL	48	152,79	150,95	200	200
77AT10048X	48 AT10-200 ST	48	152,79	150,95	200	220
77AT10050	50 AT10-200 AL	50	159,15	157,30	200	200
77AT10050X	50 AT10-200 ST	50	159,15	157,30	200	220
77AT10051	51 AT10-200 AL	51	162,34	160,50	200	200
77AT10051X	51 AT10-200 ST	51	162,34	160,50	200	220
77AT10052	52 AT10-200 AL	52	165,52	163,65	200	200
77AT10052X	52 AT10-200 ST	52	165,52	163,65	200	220
77AT10054	54 AT10-200 AL	54	171,89	170,05	200	200
77AT10054X	54 AT10-200 ST	54	171,89	170,05	200	220
77AT10055	55 AT10-200 AL	55	175,07	173,20	200	200
77AT10055X	55 AT10-200 ST	55	175,07	173,20	200	220
77AT10056	56 AT10-200 AL	56	178,25	176,40	200	200
77AT10056X	56 AT10-200 ST	56	178,25	176,40	200	220
77AT10057	57 AT10-200 AL	57	181,44	179,60	200	200
77AT10057X	57 AT10-200 ST	57	181,44	179,60	200	220
77AT10058	58 AT10-200 AL	58	184,62	182,75	200	200
77AT10058X	58 AT10-200 ST	58	184,62	182,75	200	220
77AT10059	59 AT10-200 AL	59	187,80	185,95	200	200
77AT10059X	59 AT10-200 ST	59	187,80	185,95	200	220
77AT10060	60 AT10-200 AL	60	190,99	189,10	200	200
77AT10060X	60 AT10-200 ST	60	190,99	189,10	200	220
77AT10062	62 AT10-200 AL	62	197,35	195,50	200	200
77AT10062X	62 AT10-200 ST	62	197,35	195,50	200	220
77AT10070	70 AT10-200 AL	70	222,82	220,95	200	200
77AT10070X	70 AT10-200 ST	70	222,82	220,95	200	220
77AT10075	75 AT10-200 AL	75	238,73	236,90	200	200
77AT10075X	75 AT10-200 ST	75	238,73	236,90	200	220